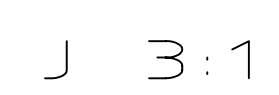


Drawings / Zeichnungen:
Vertical drawers Org@Tower Wood / Org@Tower Wood

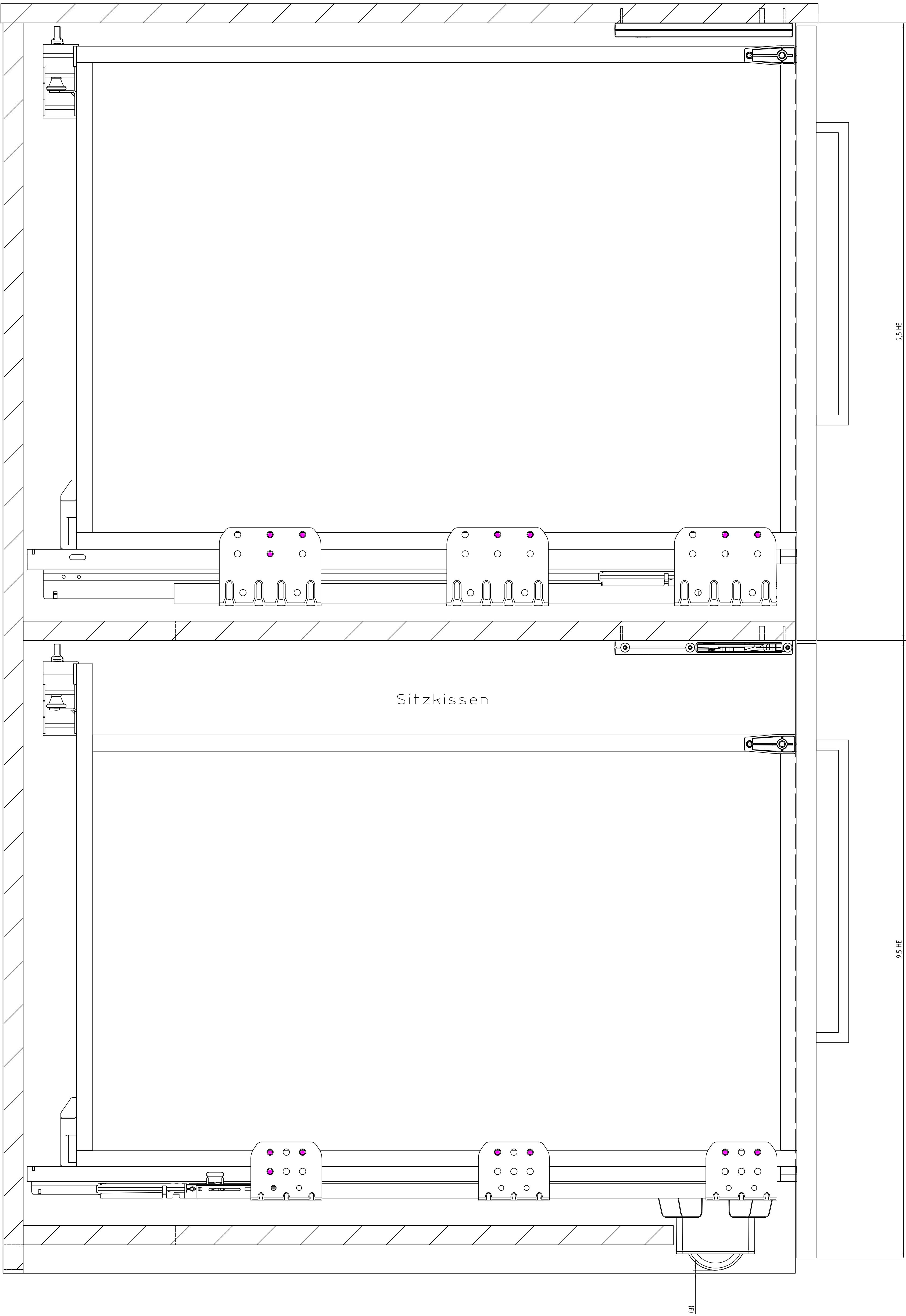
Technik für Möbel

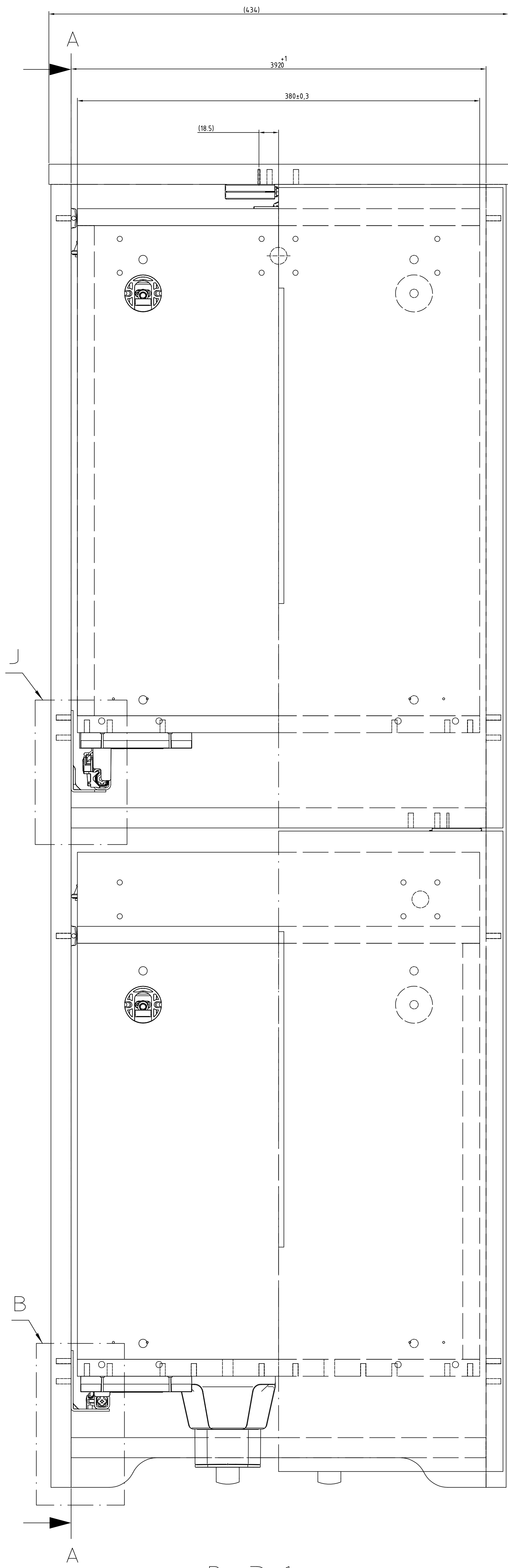


Article / Artikel	9 209 621
Height units / Höheneinheiten (HE)	19
Height division / Höheneinteilung (HE)	9,5 + 9,5
Installed width / Einbaubreite (mm)	392
Installed depth / Einbautiefe (mm)	≥ 760
Drawer runner / Auszugführungen	Quadro Big Duplex / Quadro Compact



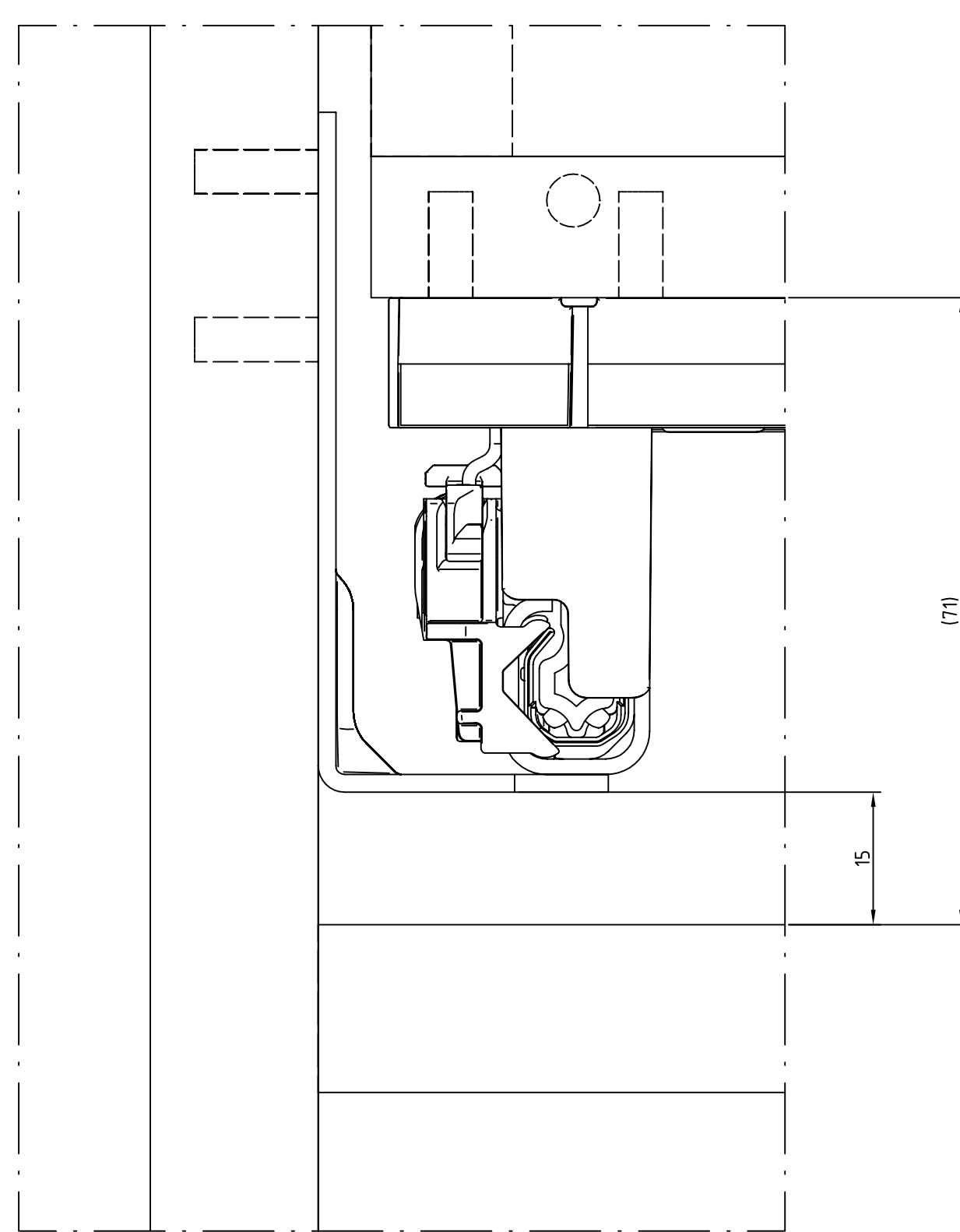
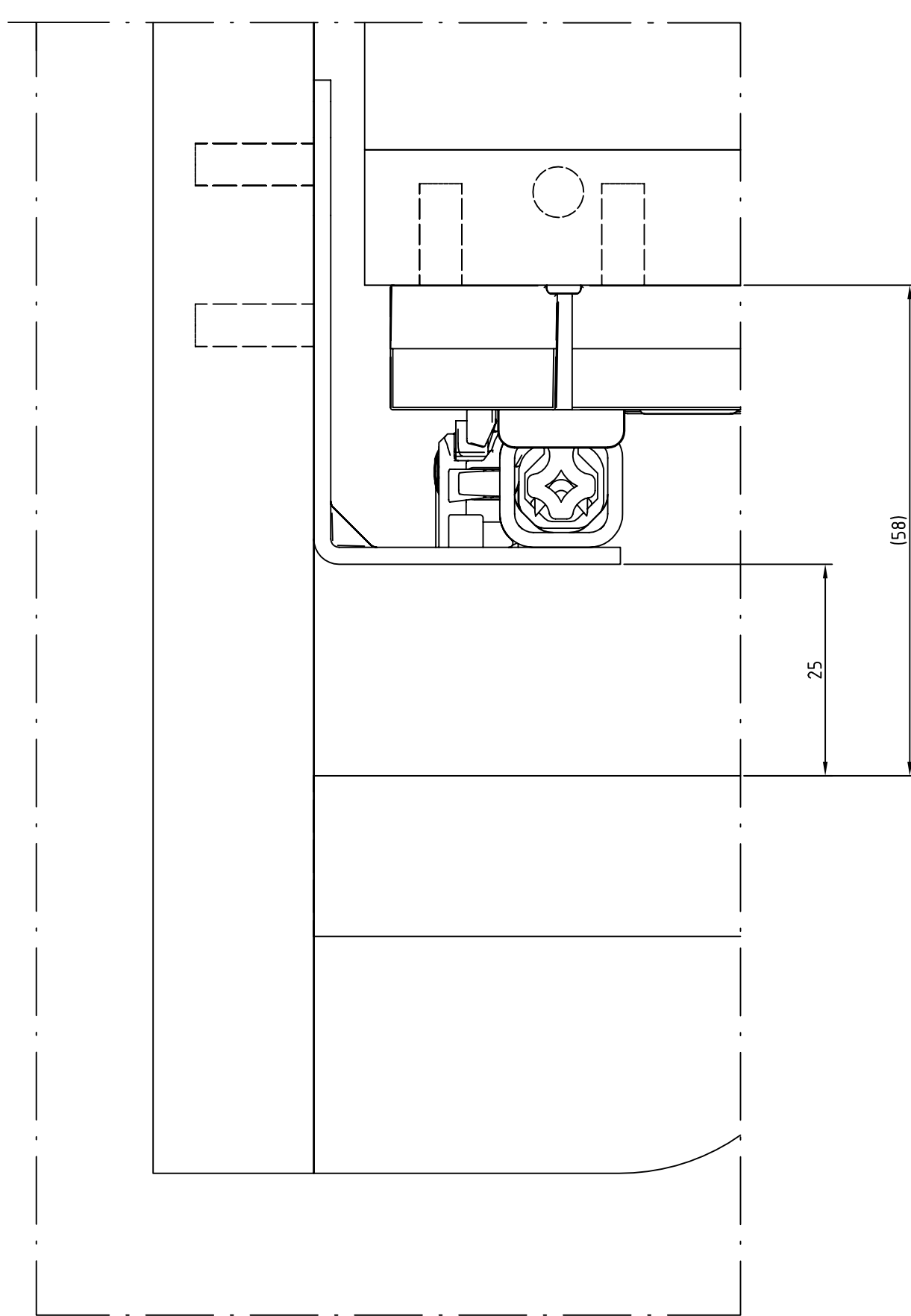
A-A



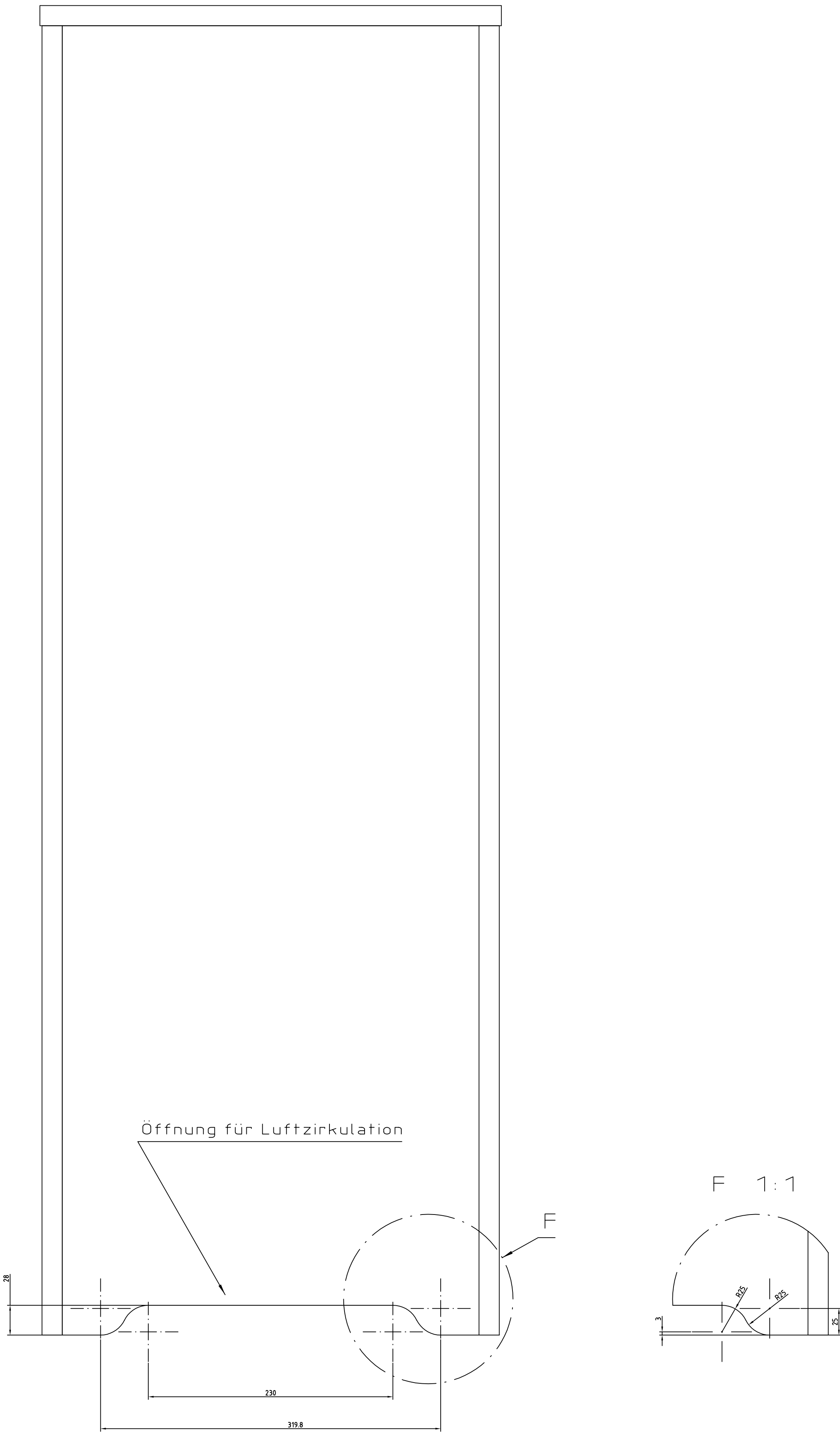
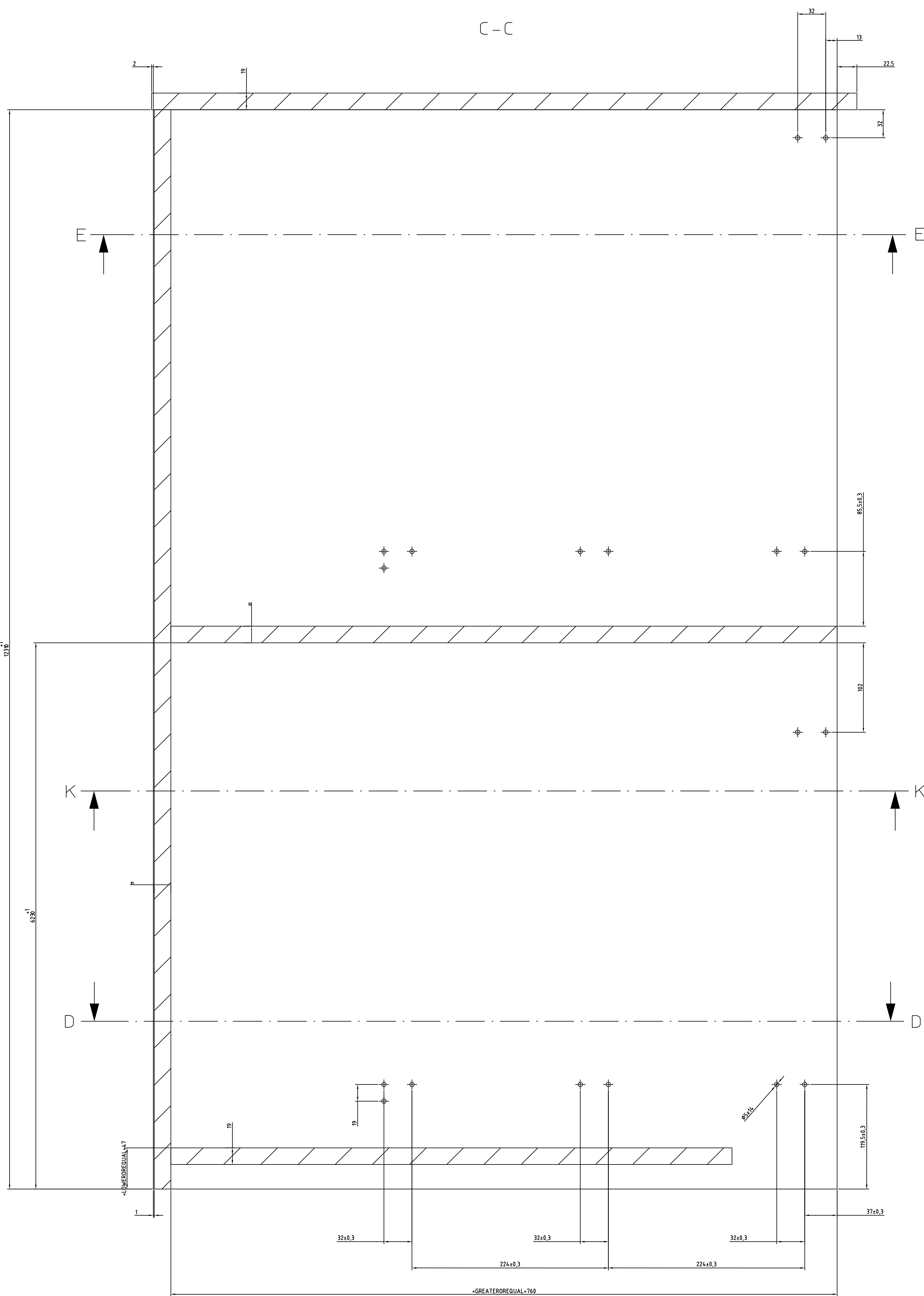
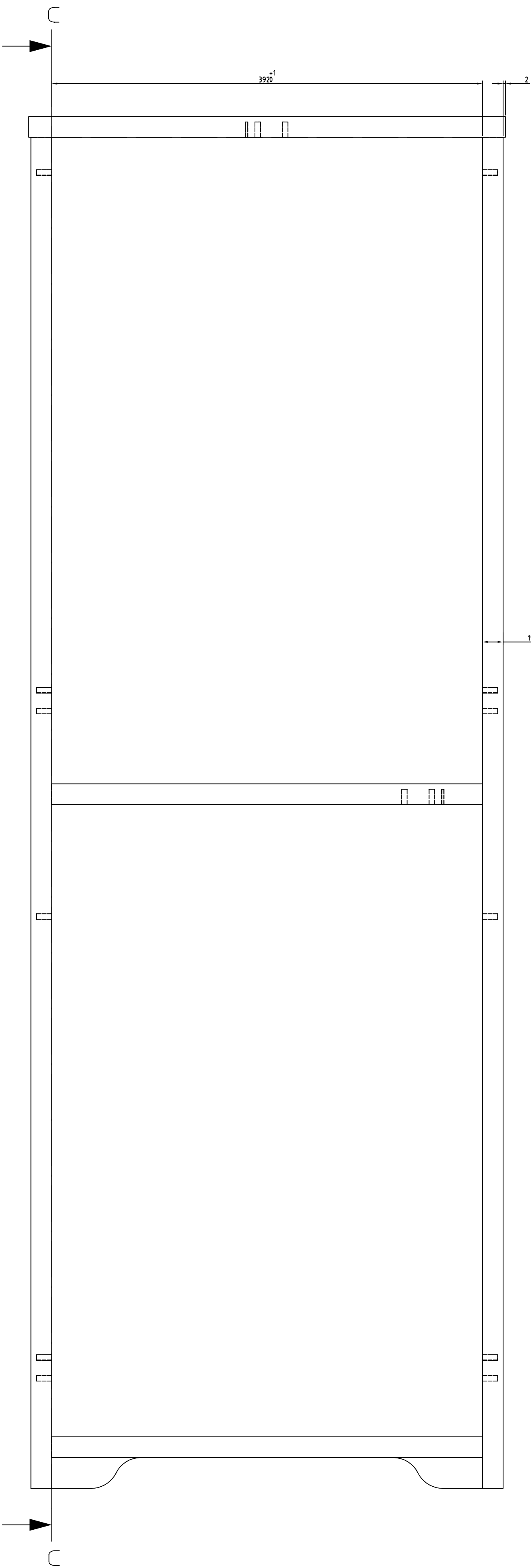


B 3:1

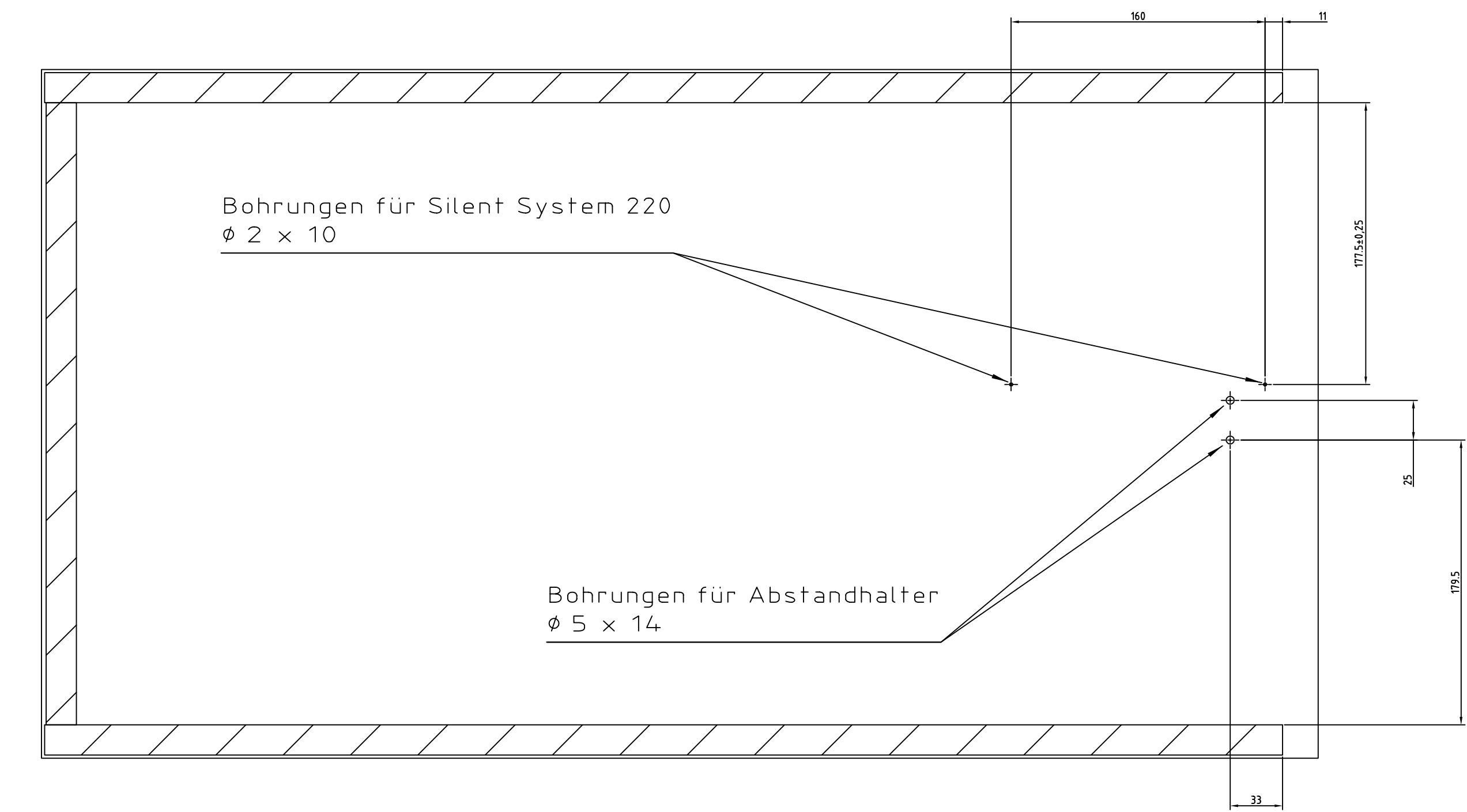
J 3:1



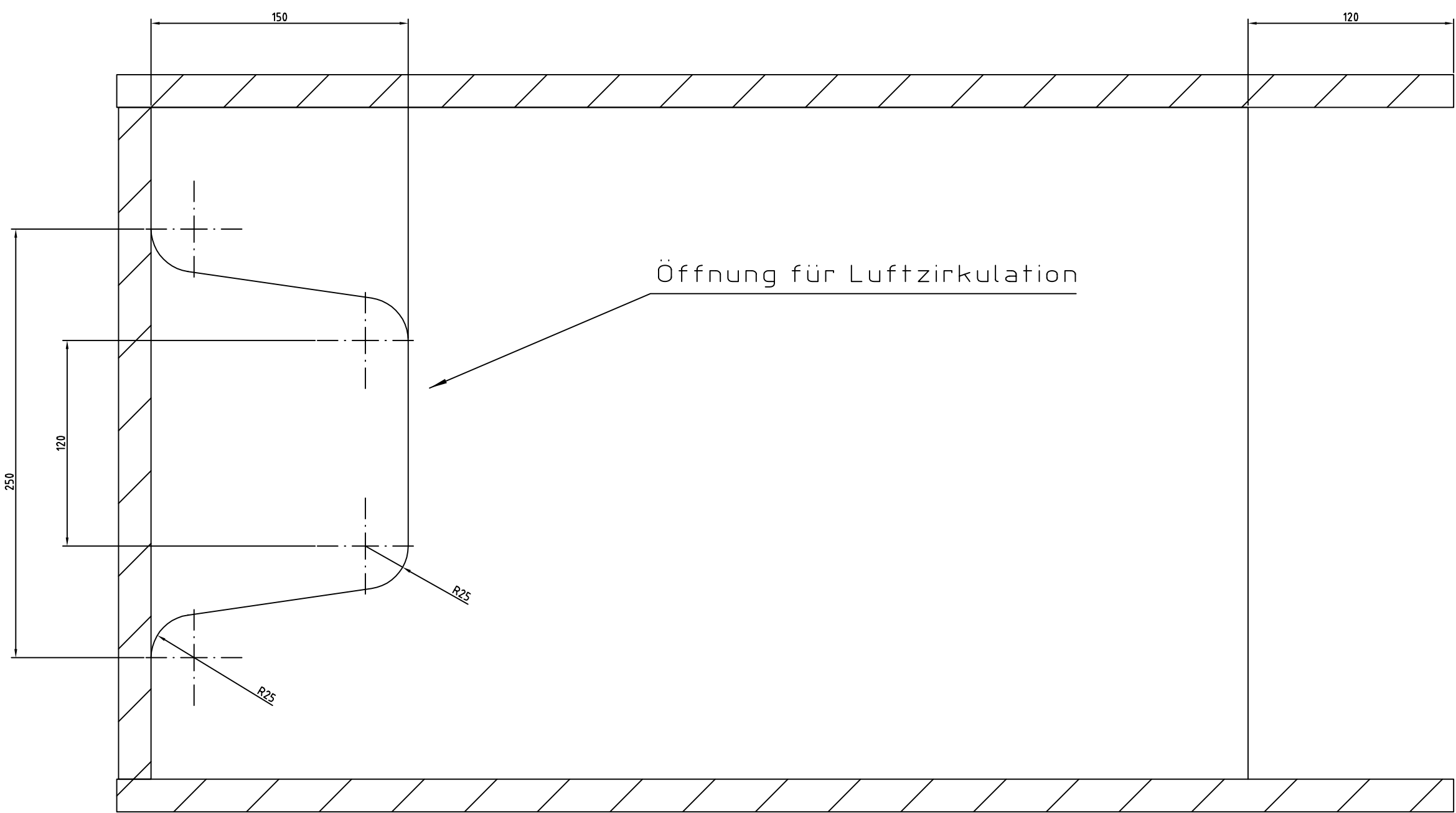
Der Quadro Compact benötigt min. 2 mm Luft / Abstand bis zum Unterboden. (Hier: 25mm), Siehe Detail B
Der Quadro Big Duplex benötigt min. 2 mm Luft / Abstand bis zum Unterboden. (Hier: 15mm), Siehe Detail J



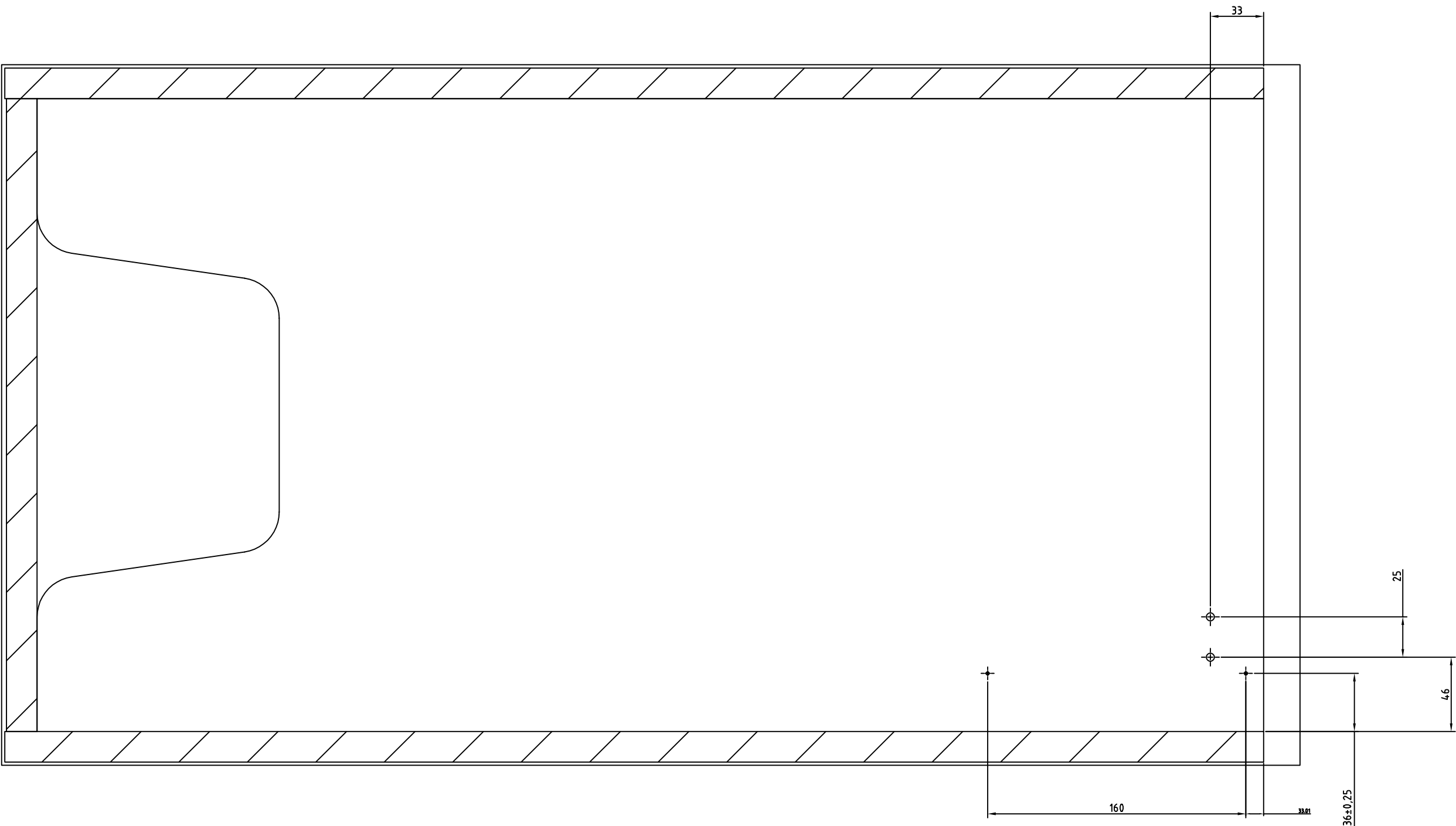
E-E

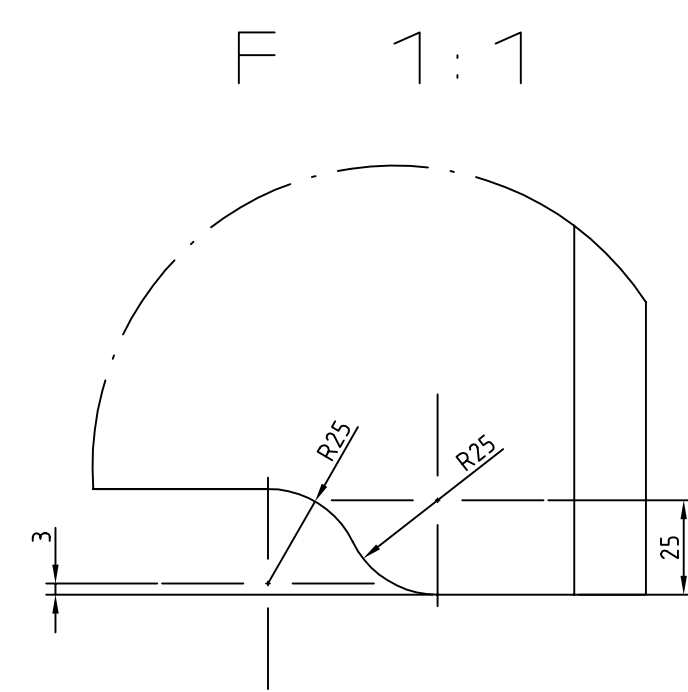
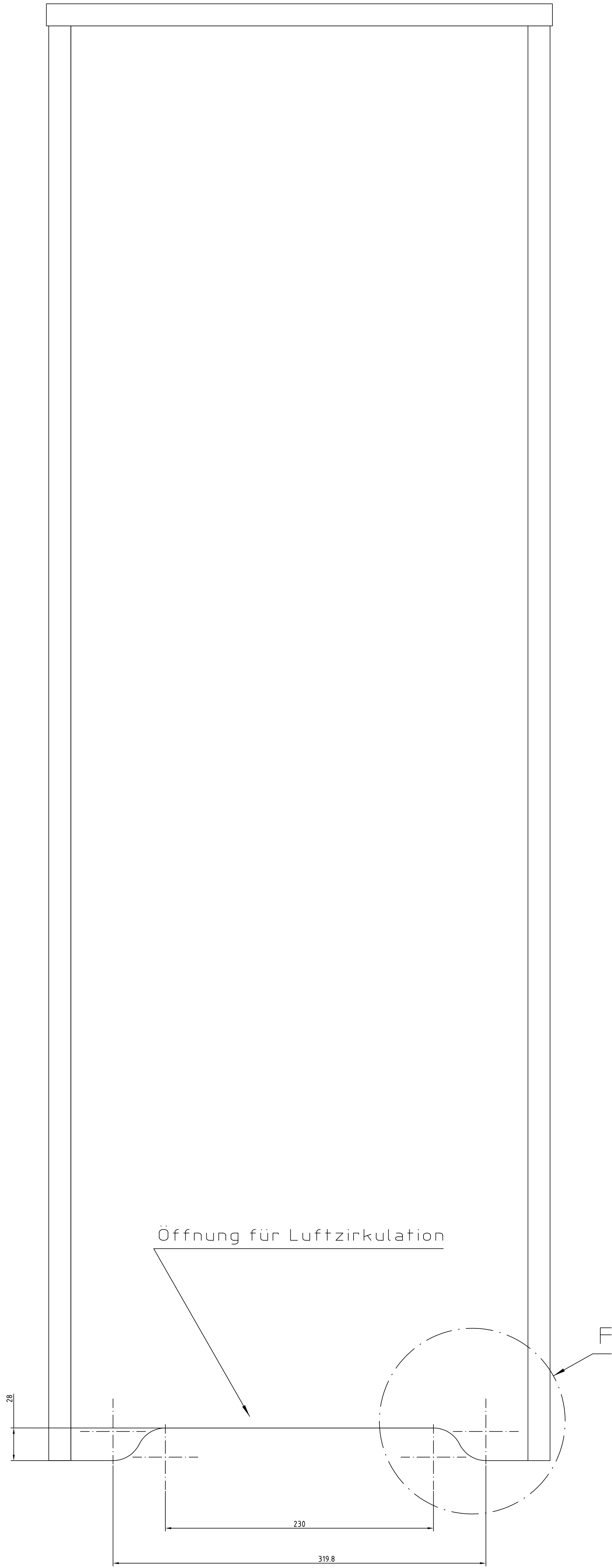


D-D

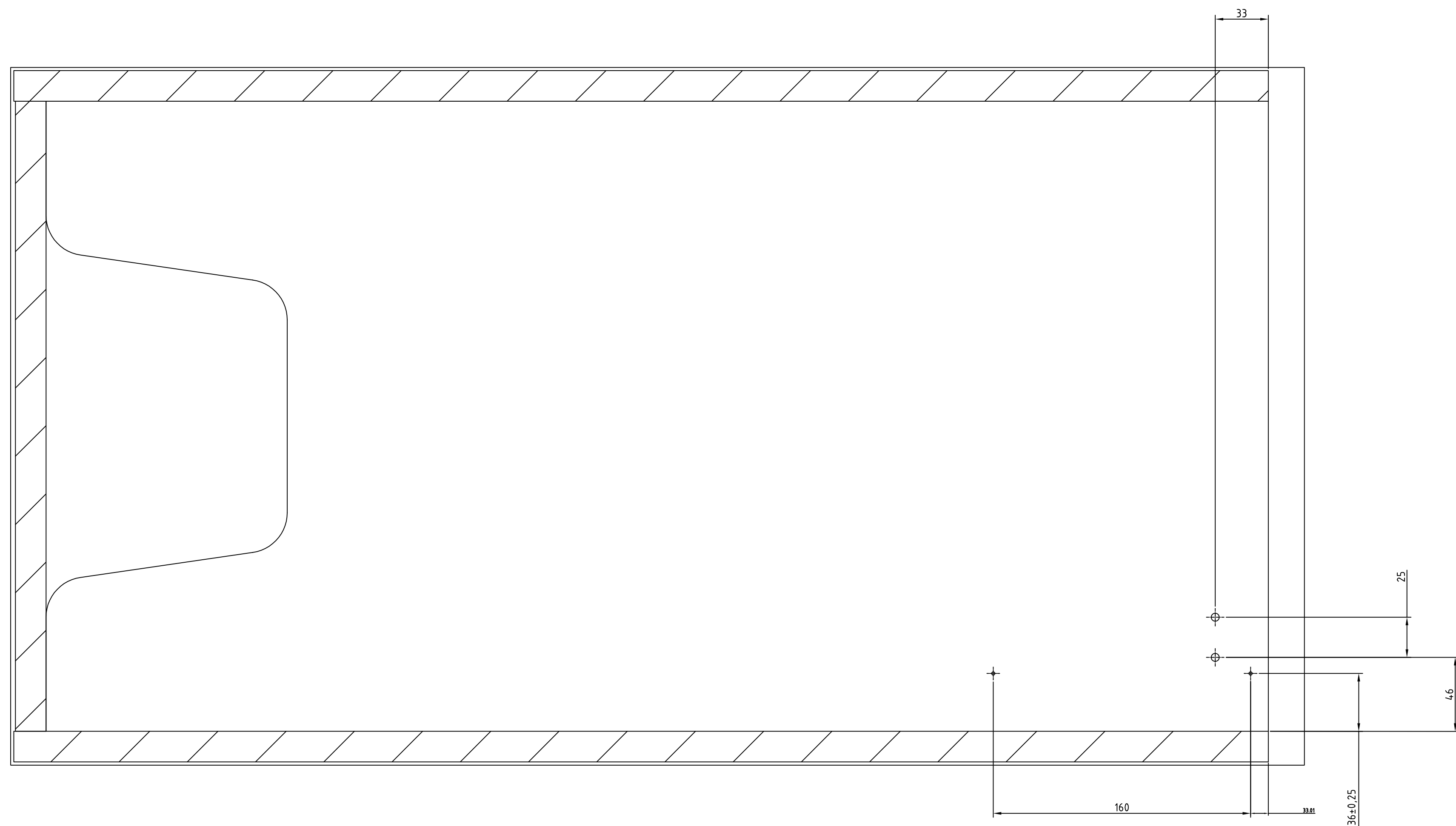


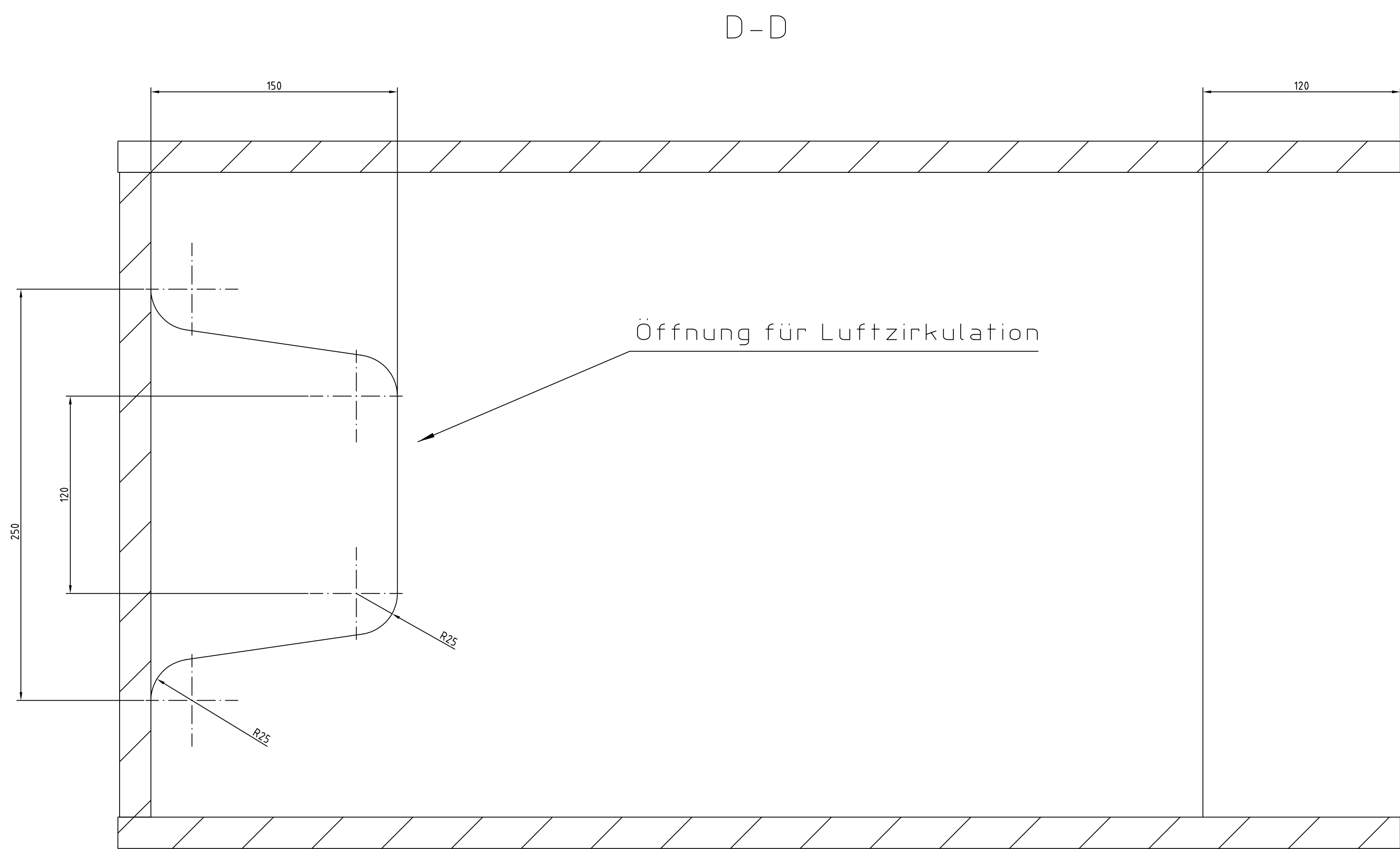
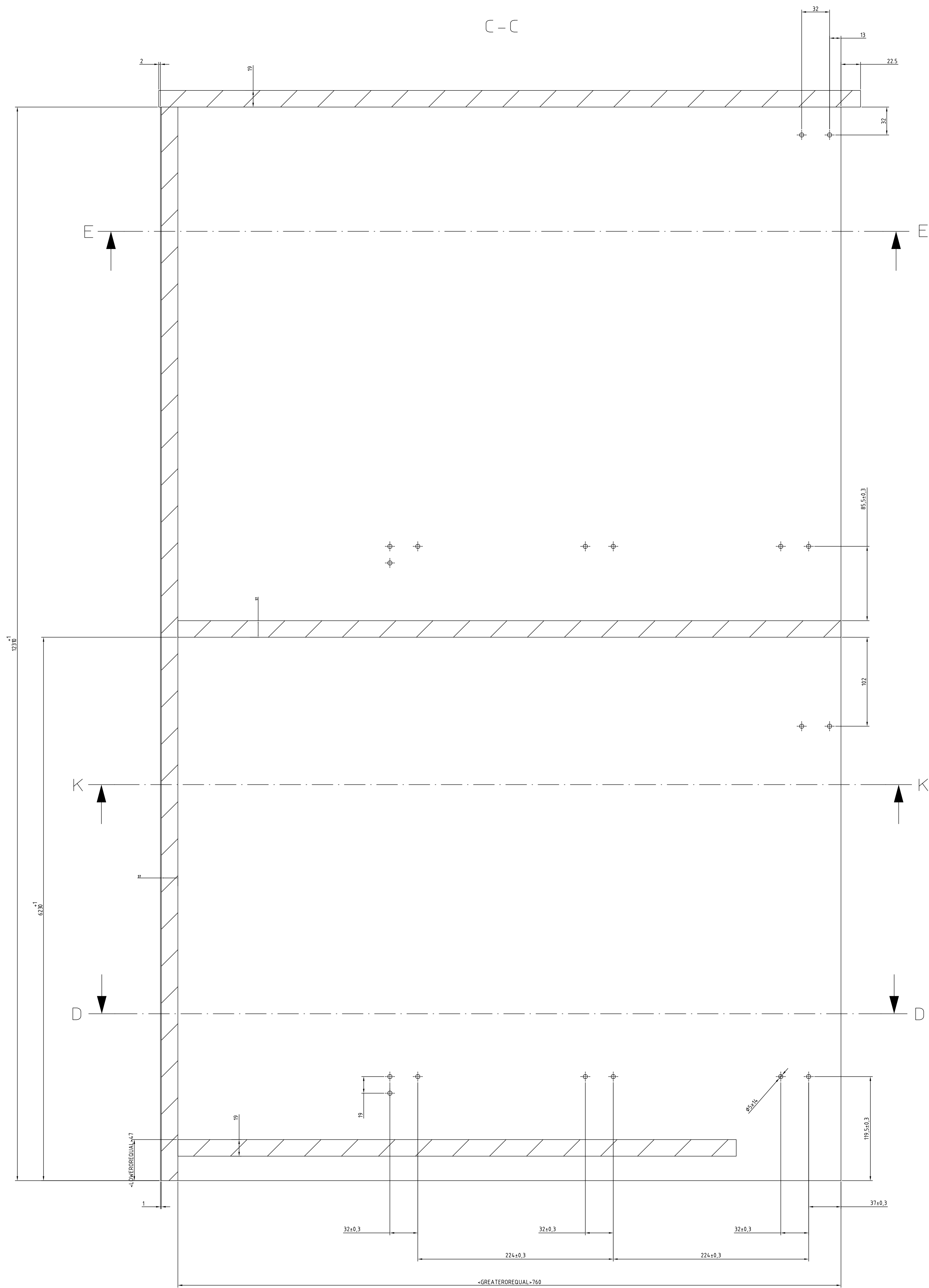
K-K

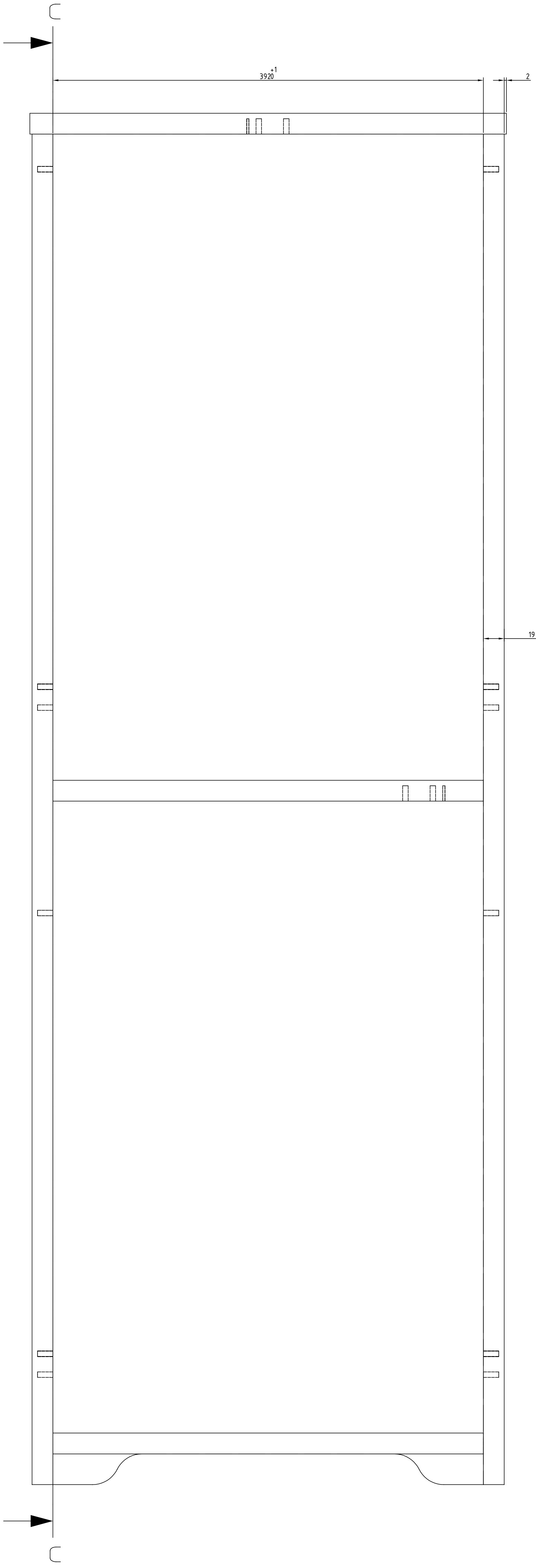




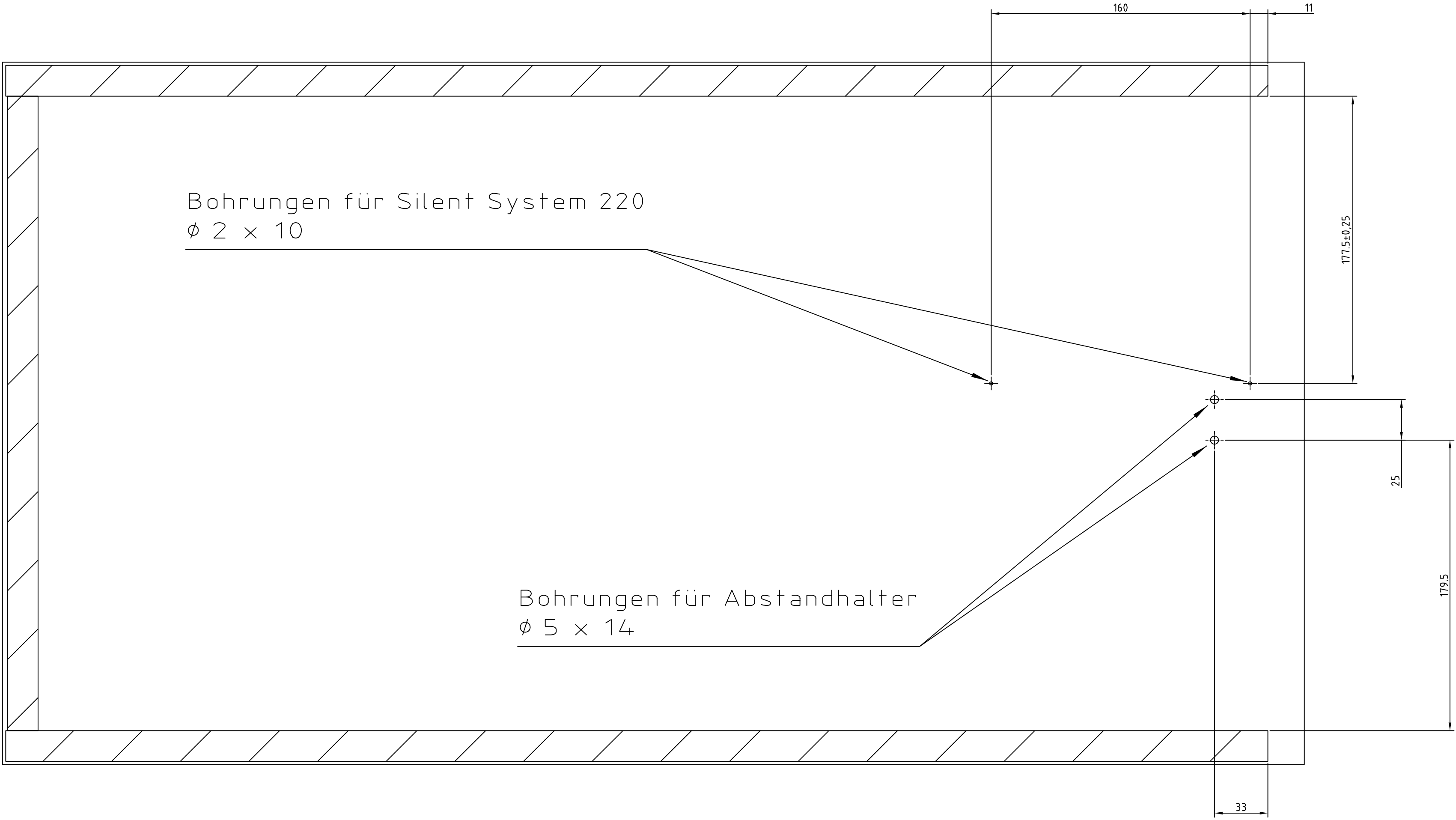
K-K

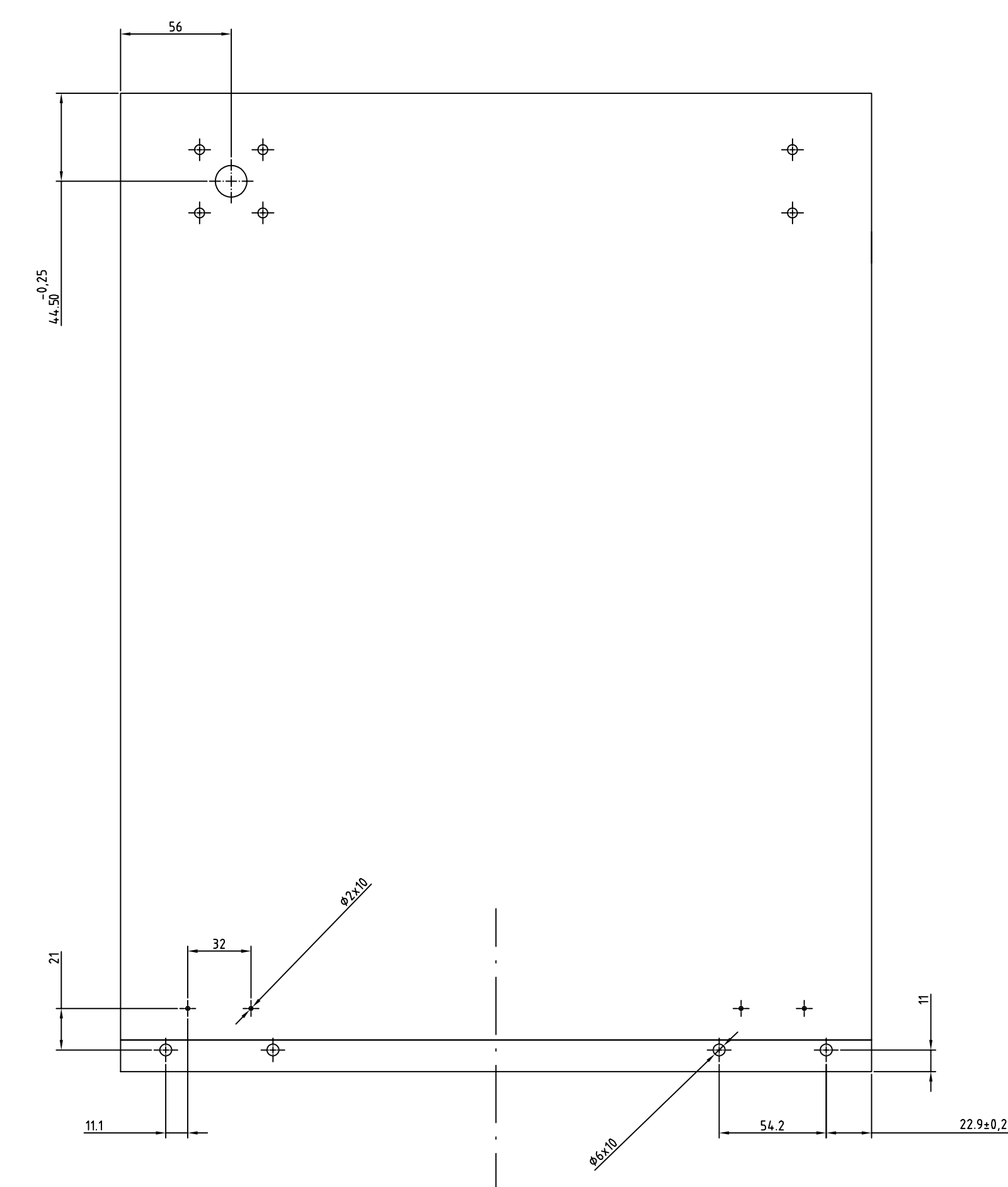
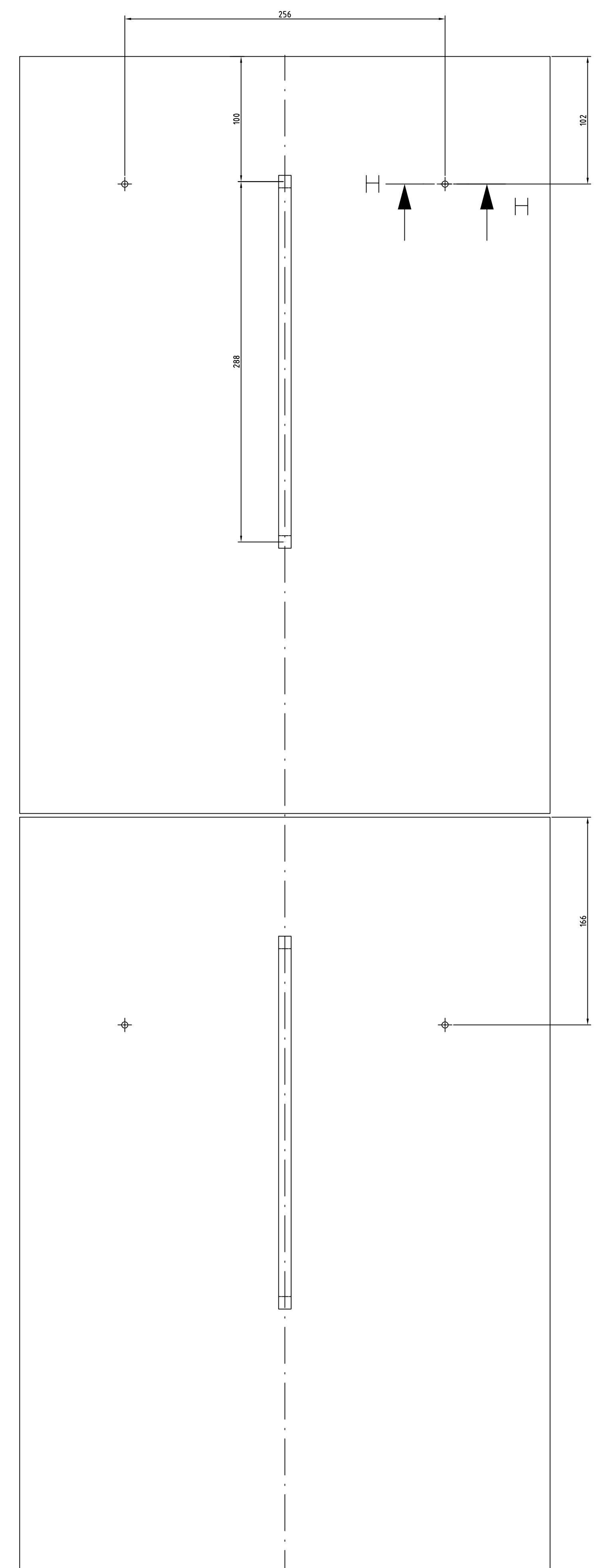
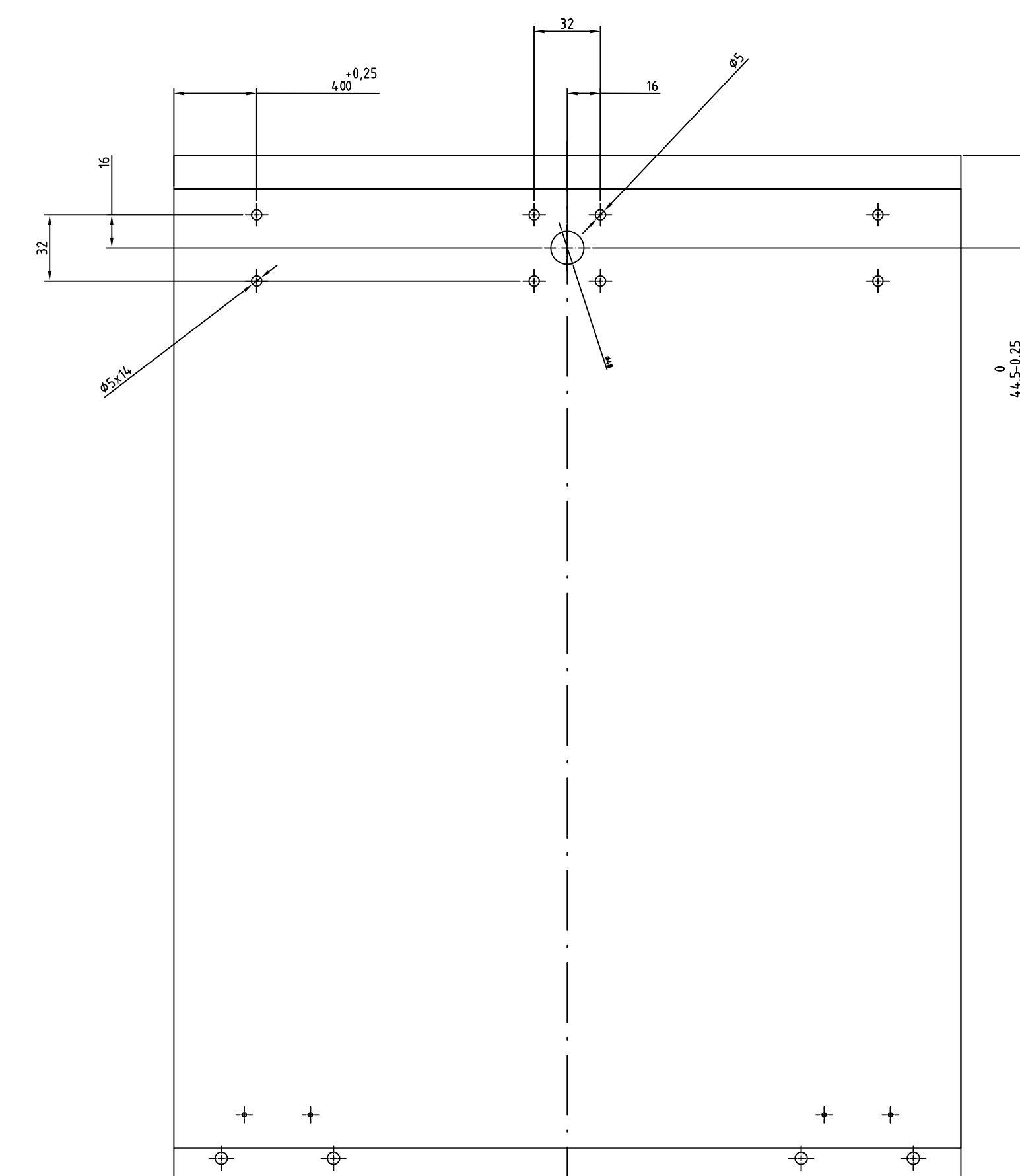
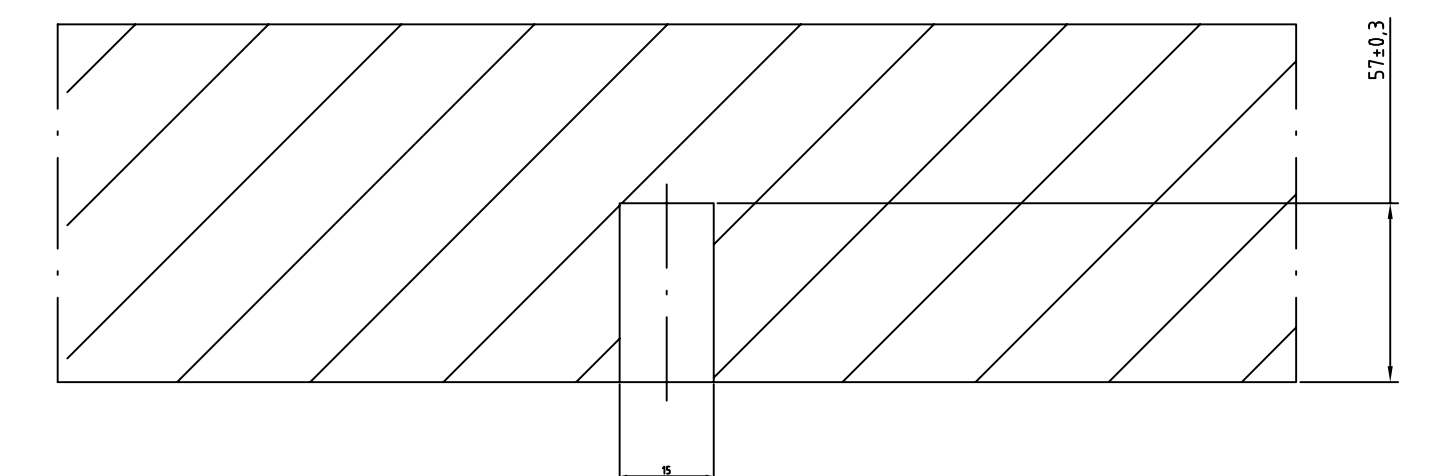


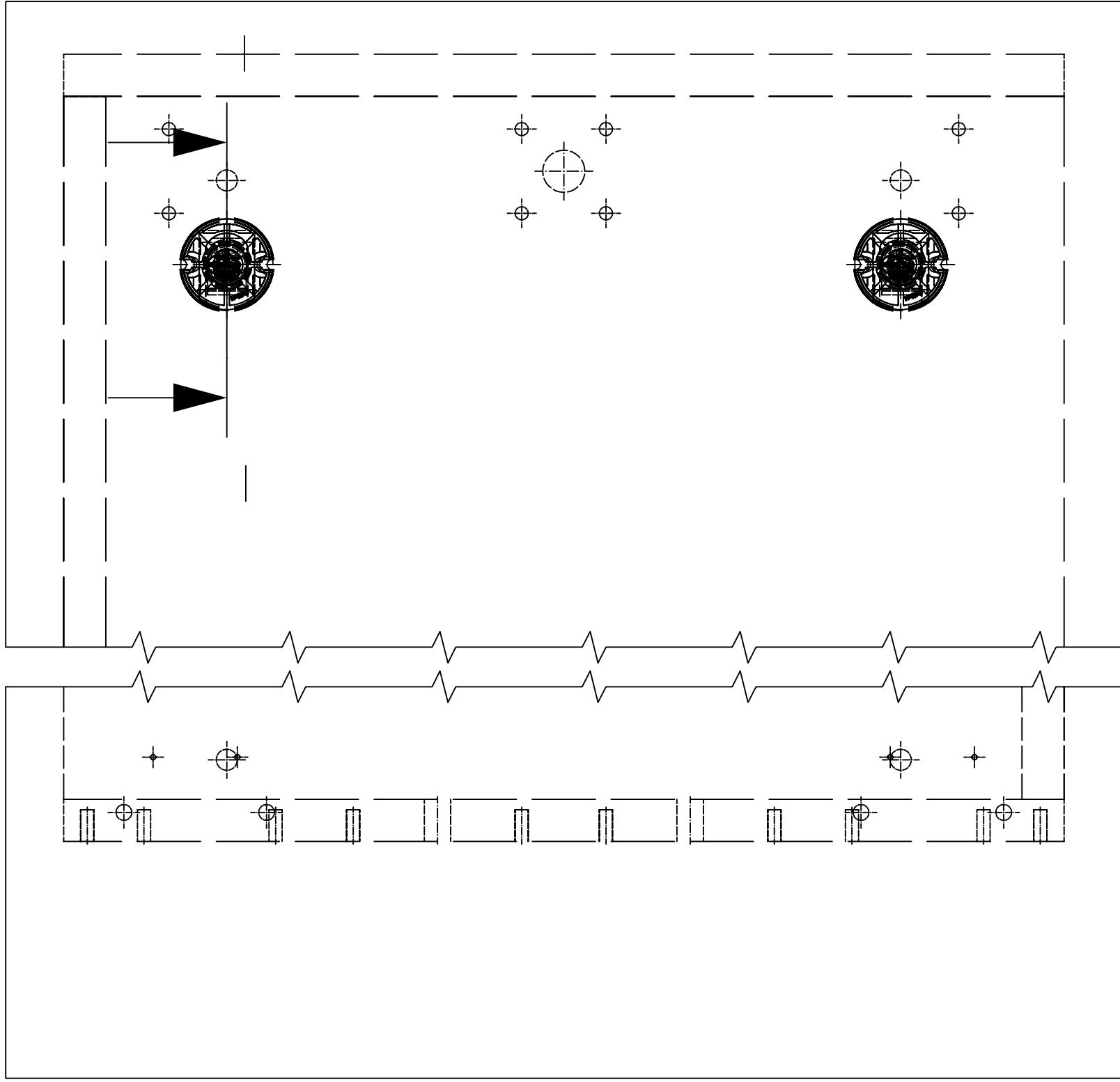




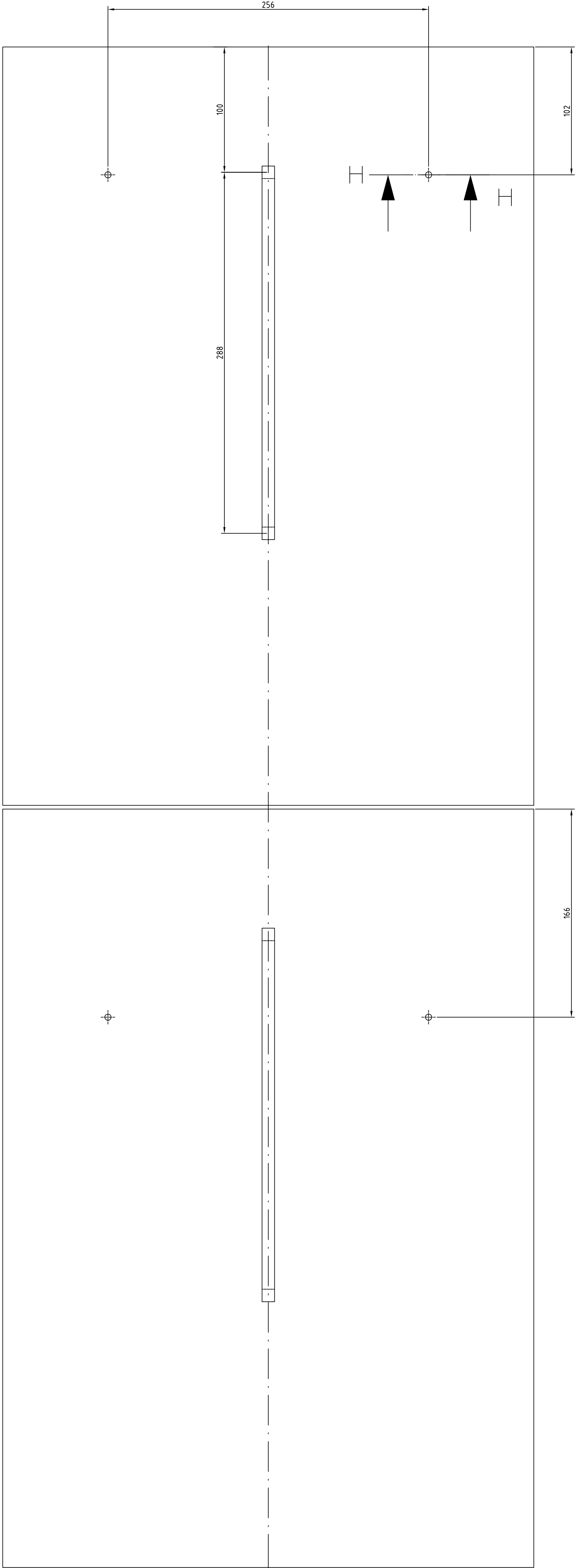
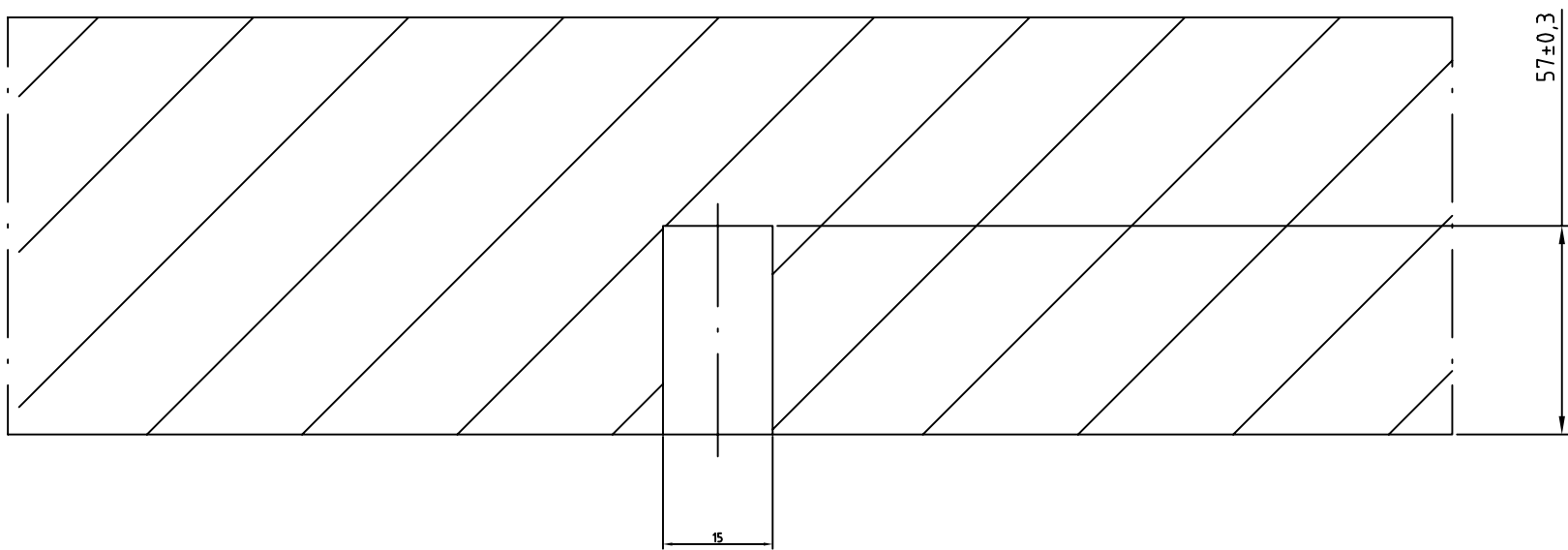
E-E







H-H 2:1



1-1 3:1

Blendenbefestigungsschraube:
Rückwandkopf, Kreuzschlitz – 5 x 30

