

HOME **ENHANCEMENT**
IDEABOOK





* Refer Website

Warranty

For Warranty
please refer to website.
www.hettich.com/in



Free Design Service:

Looking for Designs to liven up your Living Room, Bedroom, Bathroom & Kitchen. A dedicated team of highly qualified Interior Designers is at your service to provide customised design solution to suit every taste and budget at zero cost to you.

Free Consultation at your doorstep:

Looking for perfect Furniture Fittings solution? A dedicated team of highly qualified professionals is at your service to provide the perfect furniture fittings solution to suit your need and budget at zero cost to you.

Hettich Customer Care Service:

In today's fast paced and technologically advanced era, most of the organizations succumb to the pressure of staying ahead in the competition and often, end up neglecting the most critical aspect of business i.e. CUSTOMERS. Hettich, being a CUSTOMER CENTRIC organization, is very sensitive towards this tendency; hence, we constantly try to provide the best and quality driven products and services.

Enquiry & Customer Services

Toll Free : 1800 209 2096 (office hours)
Email: sales_enquiry@in.hettich.com
customer_services@in.hettich.com
www.hettich.com

Free Training Services:

Free Training Services for carpenters of trade partners and customers

Training Center Address:

Hettich Poddar Wood Work Institute
Plot No.2, First Floor,
DLF Industrial Estate - 1
Near NHPC Metro Station
Faridabad, Haryana

Email: info@hpwwi.com
Ph: 0129 - 4203888



HOME ENHANCEMENT IDEABOOK





Hettich Forum, Kirchlengern, Germany



Hettich Manufacturing Plant, Vadodra, India



Hettich Manufacturing Plant, Indore, India

ABOUT US

The company's origins date back to 1888 when Karl Hettich began making the new clock component he had invented. By 1930, his descendants had diversified into furniture fittings, setting up production in East Westphalia – a Centre of the German furniture industry.

Today, Hettich, still family-owned, has become an industry leader with a worldwide reputation. We're one of the world's largest manufacturers of high-quality furniture fittings, with over 6,000 employees in more than 100 countries. The company's success has been built on four enduring values: quality, innovation, close cooperation with customers, and absolute reliability. We work to inspire our customers with our ideas and our passion.

MEGATREND

FROM MEGATREND
TO PRODUCT SOLUTION.

Fascin[action]

Ever shrinking living spaces in towns and cities, new life concepts and work models, or the increasing demand for customizable furniture, Hettich provides exciting answers to the noticeable changes taking place in life and home living due to these megatrends.

In line with our Fascin[action] Concept, Hettich presents a collection of exciting design concepts curated to cover all aspects of what furniture buyers expect: feel style, enjoy comfort and win storage.



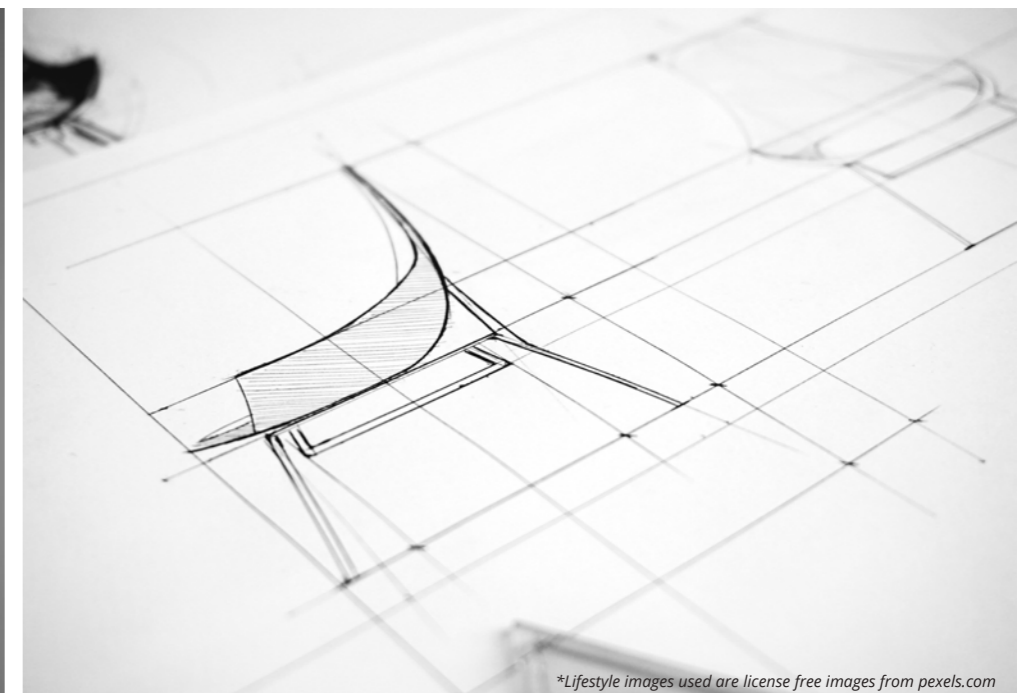


HOME ENHANCEMENT

At Hettich, we believe that Home Enhancement is the future for successfully upgrading one's home within minimum time and money.

Gone are the days when people used to renovate their homes often. Nowadays, people believe in enhancing particular areas, which will serve more purpose and add freshness to their already perfect houses.

In this Ideabook, we have tried to develop ideas that will integrate perfectly with the existing aesthetic of your house and enhance the efficiency of that space.



*Lifestyle images used are license free images from pexels.com



WHY?

HOME ENHANCEMENT

People often wonder why should one indulge in Home Enhancement when they can renovate altogether? How does Home Enhancement differ from Home Renovation? What are the benefits?

We have articulated the answer in six simple steps.



SAVES TIME

Home Enhancement is a time-saving way for refreshing your homes as you will not change your home's structure but will enhance the aesthetic & functionality of the existing space.



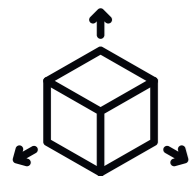
SAVES MONEY

One of the most significant benefits of Home Enhancement is that it saves money. It will bring the same freshness to your house without spending many dimes. Home Enhancement mainly focuses on enhancing minor details, which make a significant difference.



HOLISTIC REFINEMENT

The whole is more than the sum of its parts, which is quite true when it comes to Home Enhancement. It enables you to think and design your home or space such that it emphasizes aesthetics and functionality while focusing on utility.



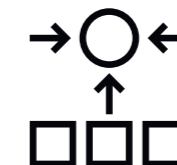
FREEDOM TO CUSTOMIZE

Home Enhancement allows you to customize things according to your needs. You can create furniture you can use for multiple items instead of buying three different furniture pieces. You can customize according to your likes, size, and style.



MACRO LEVEL DETAILING

The phenomena of Home Enhancement has its foundations in detailing the macro parts to make the full picture splendid. We can bring a lot more freshness and newness by just tweaking, upgrading, or changing the small details of a space. This enhances the beauty & utility of the entire space.



ACCOMMODATES IDIOSYNCRASIES

Home Enhancement is unique to everyone. It caters to your problems and choices. So, when you enhance your home, it becomes individualistic in nature and hence unique.



“Enhance a room by adding a signature piece of furniture. This is an item that-because of its color, shape, style, size, element of surprise, or striking presence-offers a wow factor. Multiple signature pieces in a room will make you and your guests dizzy, but one well-chosen piece will draw the eye, spark conversation, and infuse your space with energy.”

-Melissa Michaels



*Lifestyle image used is license free image from pexels.com



CELESTE

Celeste is a console unit that will enhance the beauty of your house while providing you with ample storage space. The flushed façade and curved edges make it very neat and create an illusion with its form & aesthetic.



Fittings Used

Quadro Runners
Sensys Hinge
KA Telescopic Runners

Advantages

Ample storage
Mitered sides
Multi-purpose application

CMF

Polar White
MDF
Matt

BREEZE

Breeze is the final ingredient to the recipe for your perfect hideaway, housing all your favourite beverages, all concealed away inside a compact package ready to be revealed to the guests you want to surprise.



Fittings Used

Glass Hinge
Quadro Runners
LegaMove

Advantages

Hidden storage compartments
Minimalistic design
Integrated dispenser machine

CMF

Faded Black, Beige
MDF & Brass
Matt

UTILE

Utile is a bedside unit that can easily enhance the beauty of your already existing bedroom set up. Its universal design language can be adapted and used in any set up.



Fittings Used

Quadro Runners
CUBE

Advantages

Compact bed unit
Utilitarian design
Integrated power outlets

CMF

Faded Black, Sained Wood
MDF
Matt

NUCLEUS

Good kitchens make great houses. The nucleus is a Kitchen Concept which is contemporary in its functionality and design. It has a screen for video conferencing and a hidden compartment on the island to store your things in an orderly manner.



Fittings Used

AvanTech YOU
LegaMove
Vizard

Advantages

Minimalistic design
High functionality
Integrated display panel

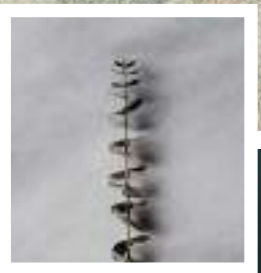
CMF

Weathered bamboo slats
MDF
Matt



ANCHOR

The Anchor displays the harmony between the light glass and the rough concrete, drawing in a quirky element into the living room space through the whimsical use of materials. Fine lines and refined aesthetics give the Anchor a character of uniqueness and significance.



Fittings Used

AvanTech YOU
Halemier GlassLine
Quadro Runners

Advantages

Organisation
Storage space
Attractive outlook

CMF

Matt Black, Tinted Black
MDF, Frosted Acrylic
Matt

LUMIA

Lumia is a minimalistic TV unit that delivers entertainment to your living room in style. Housing the latest flexible smart TV technology, Lumia lets you sneak your TV and make it reappear on your command while blending perfectly into your living room space.



Fittings Used

AvanTech YOU
Glass Hinge
Halemaier ChannelLine D

Advantages

Minimalistic design
High functionality
Integrated foldable TV

CMF

Faded black, Pale Peach
MDF, Tinted glass
Matt



SOLITUDE

Solitude is a furniture unit that can convert any corner of your house into a personal study with just a pull, while providing you ample hidden storage and a smartboard for working.



Fittings Used
KA5740
Quadro Runners

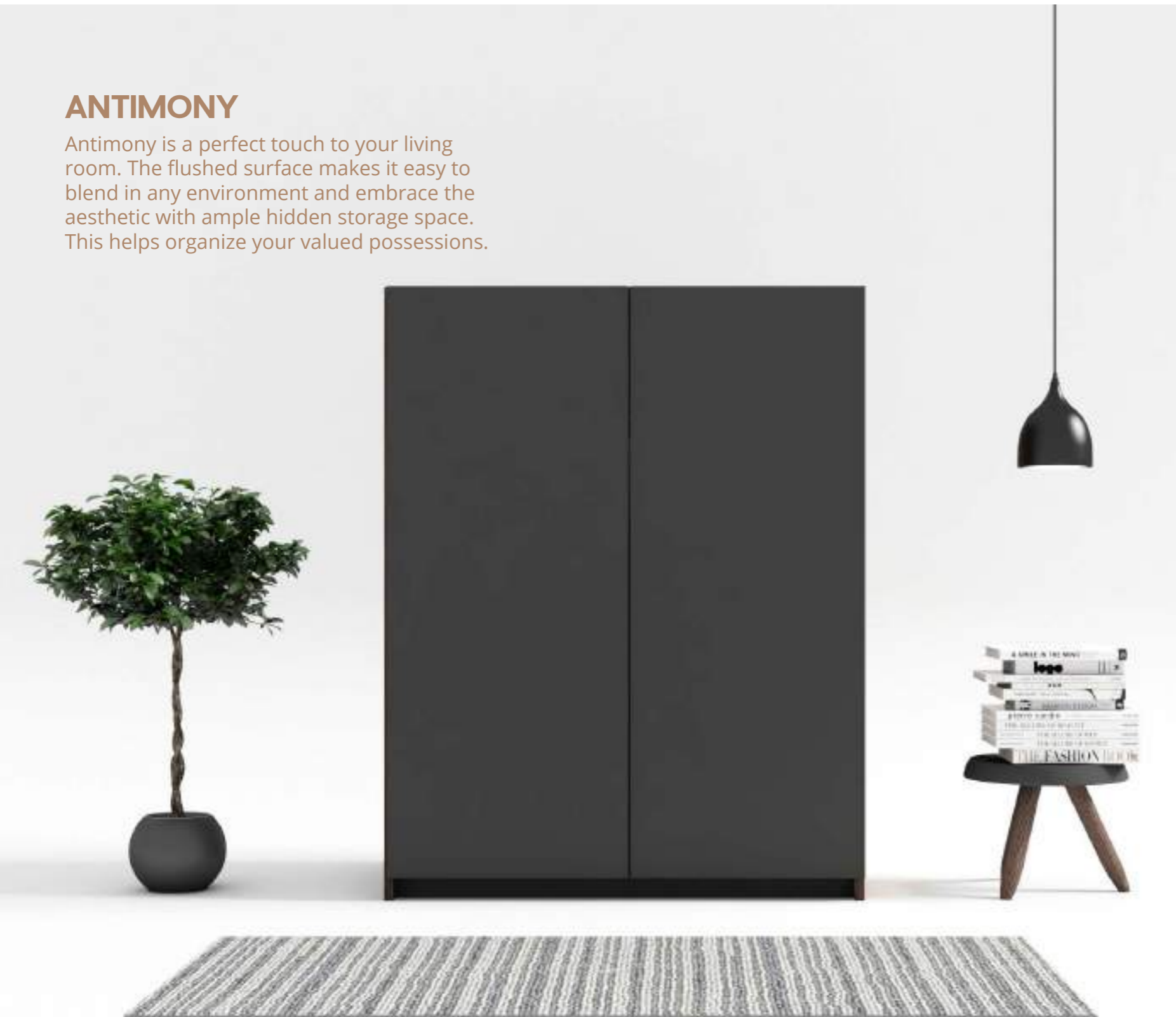
Advantages
Room divider
Storage space
Integrated smartboard

CMF
Straw Balsam, Faded Black
MDF
Matt



ANTIMONY

Antimony is a perfect touch to your living room. The flushed surface makes it easy to blend in any environment and embrace the aesthetic with ample hidden storage space. This helps organize your valued possessions.



Fittings Used

WingLine L
Quadro Runners
Comfort Spin

Advantages

Ample storage
Optimized work space
Hidden compartments

CMF

Black Suede, Matt Mahagony
MDF
Matt



SUAVETTOL

A vital part of the new normal is the Suavettol, a storage solution with an integrated disinfectant feature. It comes in a pair of two units-one for your clothes, shoes, and bags; the other for your groceries or electronics. It has a UV light sterilization system, which helps in keeping your things 100% germ-free.



Fittings Used

Quadro Runners
KH Flap Stay
LegaDrive

Advantages

Sanitisation station
Height adjustable
Integrated UV sterilization

CMF

Aegean blue, Straw Balsam
MDF
Matt



IMPORTANCE OF FURNITURE IN A HOUSE

Everyone understands the importance of furniture. One of the things that complete a house is furniture. These elements become the most crucial part of designing any space inside a house. There has been quite an evolution of furniture from their essential utility to them being a luxury symbol and their beautiful designs today's world.



ENHANCES THE SPACE

The most integral part of home interiors is the presence and mobility of furniture. The wide-ranging variety of furniture from chairs, tables, beds, and their further sub-divisions bring out the overall look of your house. The grace and beauty of the house is enhanced by the placement of furniture.



PURPOSE OF UTILITY

The endless categories of furniture make us want more to our endless utility and comfort. Tables range from center tables to coffee tables, which we pick up for their specific purpose and utility. Similarly for chairs ranging from dining chairs to working chairs open up a sense of utility list for us to choose.



VISUAL WEIGHT

Furniture provides us with a balanced view of the entire space. The heights, volumes, and shapes give us a vision of the house. Furniture provides mediums to look upon in terms of the products' weight, mass, and quantity.



CIRCULATION & FLOW OF SPACE

The movement and the furniture placement throughout the house somehow divides the space categories, hence defining areas. The furniture ensures a flow of space with its order in terms of the arrangements and utility areas.



MYSTIQUE

Mystique is an elegant combination of wood and glass which has thoughtfully crafted details with wooden drawers. The sophisticated vanity is equipped with a mini ladder for kids to make it a comfortable unit which is inclusive and easy to use. It also has a UV sterilization tunnel for garments.



Fittings Used

Quadro Runners
Halemaier Channel Line D
Avantech YOU

Advantages

Ample storage
Mitered Sides
Multi-purpose application

CMF

Frosty white
MDF
Matt



METURA

When you need high utility furniture with a beautiful exterior, Metura is the one you should bring home. It enhances your house with high functionality and provides you with extra storage space & great organization capability.



Fittings Used

ArciTech
Glass Hinge
Sensys Hinge

Advantages

Display cum storage
Organisation ability
Hidden compartments

CMF

Twilight Ashwood
MDF
Matt

SLINK

Slink is a unique wardrobe that not only provides adequate storage space but an excellent organizing capability. It also has an entertainment unit that holds your gaming console and TV. The best part of slink is that it hides away all the clutter and displays a clean facade.



Fittings Used

AvanTech YOU
KA5740
CargoTech Wardrobe Accessories
Halemaier ChannelLine C

Advantages

Space to relax
Gaming zone
Inclusive design

CMF

Weathered copper
MDF
Glossy

CODICIL

A Codicil is a TV unit that will enhance your house's beauty with its minimal design and maximum utility. It has a beautiful glass display cum storage unit at its sides and ample storage space below to help make your living neat & organized.



Fittings Used

Quadro Runners
Glass Hinge
Sensys Hinge

Advantages

Minimalistic design
Portable
Multi-utility

CMF

Misty Oak, Faded Pink
MDF, Clear Glass
Matt



STASH

Stash is an intelligent combination of the hidden bar with a display unit. You can place it in your dining area to enhance the beauty & functionality of your space. The minimally visible elements make the piece graceful.



Fittings Used

Vizard
 AvanTech YOU
 CUBE
 Halemaier ChannelLine C

Advantages

Multi-dimensional
 Accessible storage
 Hidden compartments

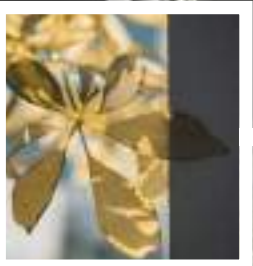
CMF

Teal Green
 MDF, Wood, Leatherlite
 Matt



DOLUPIA

Dolupia is an excellent combination of beauty and utility. It displays functionality and vision placed in the living room, which persuade you to display your favorite collectibles or prized possessions in display cum storage space.



Fittings Used

Glass Hinge
 AvanTech YOU
 Halemaier ChannelLine C

Advantages

Clear storage
 Multi-utility
 Display cum storage

CMF

Weathered Yellow
 MDF, Clear Glass
 Matt



VITALITY

A sleek vanity design that is sharp in appearance while being visually balanced. Vitality is the kind of vanity that is a vital part of enhancing one's house. The beautiful yet functional vanity comes packed with ample storage and accessible shelves for keeping your most-used items.



Fittings Used

SlideLine M
 AvanTech YOU
 Glass Hinge
 Halemaier ChannelLine C

Advantages

Multi-utility
 Storage space
 Easy accessibility

CMF

Pale Blue, Matt Black
 MDF, Hazy Glass, Mirror
 Matt



DASH

Dash is a simple yet effective solution towards a wall-mounted console packed up with ample and sufficient storage capacity to keep your belongings and some necessary elements to compliment your time spent in the open.



Fittings Used
Actro Runner

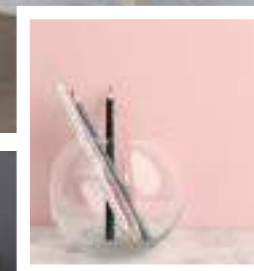
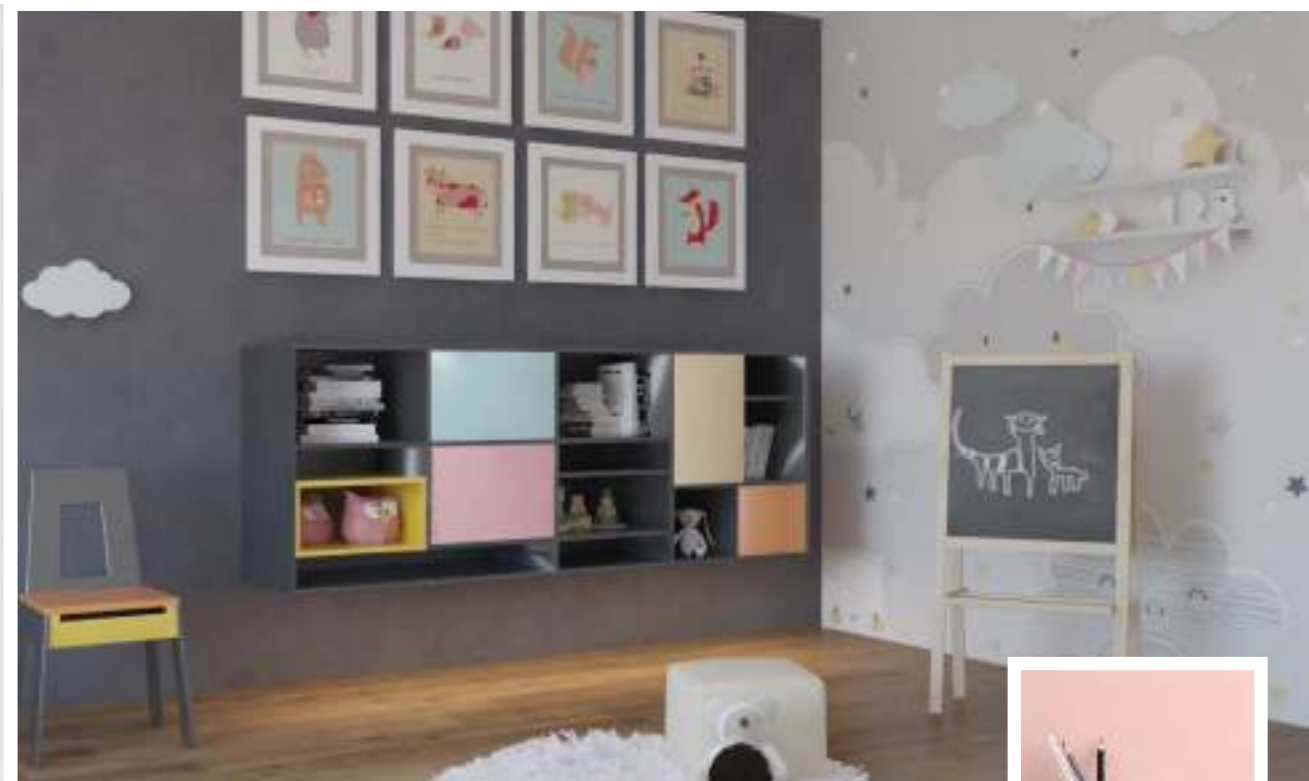
Advantages
Ample storage
Effective reach

CMF
Deep Black, Stained Wood
MDF, Wood
Matt



CUDDY

Cuddy is a playful and straightforward storage unit full of bright colors that make each cabinet unique and act as a form of self-expression through furniture.



Fittings Used

SlideLine M
Quadro Runner
Sensys Hinge

Advantages

Multi-dimensional
Accessible storage
Playful storage

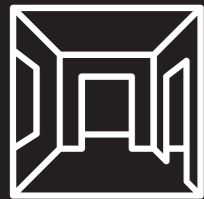
CMF

Faded Black,
MDF
Matt



TIPS TO ENHANCE YOUR HOME

Home Enhancement revamps your home and brings in new energy and freshness to your living. Here are few tips which can help you in improving your homes.



DECK YOUR HALLWAY

The hallway is the first thing anyone who comes home can see. It's the kind of a showcase that either invites someone to enter or discourages from crossing the threshold. That's why it should present itself as superior.



GET MULTI-UTILITY FURNITURE

Enhancement works best by getting multi-utility furniture for your home. The multi-utility furniture will you to utilize the area more efficiently while significantly reducing the cost and enhancing space utilization.



ADD COLOUR TO YOUR INTERIOR

Introduce some contrast to your rooms. It's quite simple. You can achieve it by adding some colorful details, all in the same color, which will make your home more colorful and cheerful.



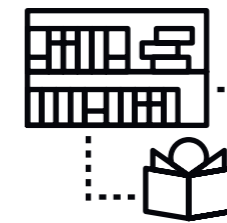
INSTALL NEW LAMPS

Lightning is such an essential element of our homes; however, it is oh so often forgotten. You generally have many different kinds of lamps in your house, but sometimes they need to be changed and replaced with new and better ones.



HANG MEMORIES AS PHOTOS

Do you enjoy capturing memories from different stages of your life? If yes, hang and set up some photos from your last holiday or the latest outing with your family and friends. This allows you will to make a unique Memory corner in your house.



CREATE A READING NOOK

Are you a bookworm, or do you just enjoy reading books? No matter what, you would probably like to have your nook at home and feel as comfortable as in a quiet library. So you should consider creating a reading nook in your house.





PRODUCTS IN [FOCUS] HOME ENHANCEMENT



Quadro Runner

A Quadro runner guarantees lasting, top performance and the last word in convenience for drawers. Working components are elegantly concealed underneath the drawer bottom panel. Wherever stress and strain demand maximum quality and stability, Quadro is the ideal solution for any furniture.



TO KNOW MORE SCAN QR CODE

Sensys Glass Hinge

Mirrors used as design elements in Doors and shelves should be able to maintain the fine balance between aesthetic and functionality. It is precisely for this reason that Hettich has developed Sensys Glass Hinges that discreetly blends into the background and effortlessly copes with the heavy weight of glass elements.



TO KNOW MORE SCAN QR CODE



Registered & Head Office:
Hettich India Private Limited
302, Durollite House,
Opp. SAB TV, New Link Road,
Andheri (West), Mumbai - 400 053
Phone: +91 22 2674 3289/3356/4089
Fax: +91 22 2674 3267

Delhi Office:
Hettich India Private Limited
A-26/4, 1st floor,
Mohan Co-operative Industrial Estate,
New Delhi - 110 044
Phone: +91 11 4889 4000, 4889 4005
Fax: +91 11 4889 4044

Vadodara Factory:
Plot No. 304, Dhanora,
Nandesari Road,
Near ECPL,
Village - Dhanora - 391 346
Dist. - Vadodara
Tel: + 91 26 5656 9003

Indore Factory:
Plot No. 1, Sector - 5,
Mhow - Neemuch Road,
Opp Lupin Ltd, Pithampur
Industrial Area, Pithampur
Madhya Pradesh -454 774

Application Centres:

New Delhi:
61, Panchkuian Road,
New Delhi - 110 001
Ph. No. : +91 11 2358 0713,
2358 4603

Mumbai:
202, Durollite House, Opp. SAB TV,
New Link Road, Andheri (West),
Mumbai - 400 053
Ph.No. : +91 22 2639 9707

Chennai:
"Heavitree", Ground Floor,
47, Spur Tank Road,
Chetpet, Chennai - 600 031
Ph. No. : +91 44 4263 7227

Kolkata:
2nd Floor, Unit Number 2A,
Tirumala 22,
East Topsia Road,
Kolkata - 700 046
Ph. No. : +91 85850 44725

Hyderabad:
" Sai Krishna "
797 - A, Road No. 36,
Jubilee Hills,
Hyderabad - 500 034
Ph. No. : +91 40 2355 8994

Ahmedabad:
1st Floor, Unit No. 102,
Safal Pegasus,
Anand Nagar,
Ahmedabad - 380 015,
Ph. No. : +91 79 4032 2824

Bangalore:
Adventz Center, Ground Floor 28,
Cubbon Road, Shivaji Nagar,
Bangalore - 560 001
Ph. No. : +91 80 4530 0400,
4530 0401

Kochi:
41/2062D, 2nd Floor
Palarivattom signal
junction, NH 47 By-pass,
Kochi - 682 028
Ph. No. : +91 93 4900 3909

Indore:
Office No.106 and 107-A,
"Brilliant Titanium",
Plot No.9, Scheme No.78, Part-II,
Indore - 452 010, Madhya Pradesh,
Ph. No. : +91 93 0171 7343

Chandigarh:
2nd Floor, Aspire Tower,
Plot no. 55, Industrial
& Business park, Phase 1,
Chandigarh - 160 002
Ph. No. : +91 93 1755 7195

Training Center Address:
Hettich Poddar Wood Work Institute
Plot No.2, 1st Floor, DLF Industrial Estate-1
Near NHPC Metro Station,
Faridabad- Haryana
Ph: 0129 - 4203888
Email: info@hpwwi.com

Enquiry & Customer Services
Toll Free : 1800 209 2096 (office hours)
Email: sales_enquiry@in.hettich.com
customer_services@in.hettich.com
www.hettich.com

Scan QR Code



Visit us online:

www.hettich.com



Master Catalogue



CargoTech
Master Catalogue



Interested?
Explore Design options

HOME ENHANCEMENT IDEABOOK

Hettich India Private Limited
302, Duralite House,
Opp. SAB TV, New Link Road,
Andheri (West), Mumbai - 400 053
Phone: +91 22 2674 3289/3356/4089
Fax: +91 22 2674 3267

Enquiry & Customer Services
Toll Free : 1800 209 2096 (office hours)
Email: sales_enquiry@in.hettich.com
customer_services@in.hettich.com
www.hettich.com

